



STARHOTELS®

# Cristallo Palace

BERGAMO

**C**onnect with business and culture at the Cristallo Palace, Bergamo. Set on the city's south side, it's easy to reach the motorway, railway station, airport or – in a few minutes – the winding medieval streets of the Città Alta. Inspired by the past but looking to the future, the hotel has seven meeting rooms for up to 450 delegates and 90 bedrooms. And, after a hard day's work, enjoy some indulgence: Cristallo Palace's restaurant L'Antica Perosa is renowned for its exquisite dining and refined ambience.

Via Betty Ambiveri, 35  
24126 Bergamo - ITALY  
T +39 035 311211  
F +39 035 312031  
[cristallo.bg@starhotels.it](mailto:cristallo.bg@starhotels.it)  
[starhotels.com](http://starhotels.com)

### **Rooms & Suites**

All 90 of our bright, comfortable rooms create a calm haven from the city buzz, with some offering wonderful views across Bergamo's skyline.

### **Restaurant & Bar**

From morning coffees and leisurely lunches to fine cuisine and secluded drinks – we've something to fulfil every wish.

### **Services**

Chosen with care to ensure an effortless visit – from transport and laundry to room service, Wi-Fi and expert local advice.

### **Meetings & Events**

Our seven modern meeting rooms for up to 450 people, exhibition spaces and experienced team will help deliver your special event with ease.







### Location

The Cristallo Palace is conveniently located close to the airport in southern Bergamo, but also within easy reach of all the attractions of the thriving city centre. Discover the city's two sides: the winding medieval streets and fresco-adorned churches, historical stores and typical restaurants of the Città Alta; the bustling streets, bars and restaurants of the modern Città Bassa. What's more, with convenient connections via the railway station and motorway, the stunning mountains, lakes and rolling hills of Lombardy are within easy reach.



### From the station

- From the train station (1.5km), take a taxi to the hotel. The cost is more or less €10. Otherwise, from Porta Nuova take bus n.5 C towards Campagnola.

### From the highway

- From the A4 Milano/Venezia, take the Bergamo exit (1km).

### From the airport

- From the Orio al Serio Airport (3km). By taxi costs approximately €15. Alternatively, take bus n. 1 towards Stazione FS, Porta Nuova and Città Alta.



## 7 meeting rooms

All meeting rooms are equipped with: Wi-Fi (at a charge), sound system, screen, LCD projector<sup>(1)</sup>, flip chart, other services are available upon request.

<sup>(1)</sup>Max one LCD projector complimentary, additional requests at a charge



Meeting rooms	Area mq / ft.	L x W mt. / ft.	Height mt. / ft.	Theatre	Class room	Conference table/ U-shape	Cabaret style <sup>^</sup>	Cocktail reception	Banquet
Milano (A)	215 2313,4	13,80x12,20 45,28x40,03	3,4-3,2 10,5-11,15	200	80	65/55	90	180	130
Bergamo (B)	79 850,04	12,60x6,30 41,34x20,67	3,4-3,2 10,5-11,15	80	35	35/30	25	70	40
Mantova (C)	27 290,52	5,50x4,90 18,04x16,08	2,9 9,51	15	-	12	-	15	-
Brescia (D)	24 258,24	4,80x4,90 15,75x16,08	2,9 9,51	15	-	12	-	15	-
Sondrio (E)	40 430,4	7,30x5,50 23,95x18,04	2,9 9,51	30	15	20/18	-	30	25
Como (F)	38 408,88	7,30x5,30 23,95x17,39	2,9 9,51	30	15	20/18	-	30	25
Varese <sup>°</sup>	27 290,52	5,60x5,50 18,37x18,04	2,9 9,51	15	-	12	-	15	-
A+B	294 3174,2	20,20x12,60 66,27x41,34	3,4 11,15	300	100	80/70	120	270	180
C+D	51 548,76	9,90x4,90 32,48x16,08	2,9 9,51	40	20	-	-	35	30
E+F	78 850,04	10,70x7,30 35,10x23,95	2,9 9,51	60	30	30	-	70	40
A+B+C+D	345 3701,44	10,00x4,90 32,81x16,08	3,4-2,9 11,15-9,51	340	125	-	140	300	200
C+D+E+F	129 1506,4	13,50x10,60 44,29x34,78	3,4-2,9 11,15-9,51	-	-	show room	-	100	70
A+B+C+D+E+F	423 4745,16	35,20x12,60 115,49x41,34	3,4-2,9 11,15-9,51	450	180	-	-	370	300
L'Antica Perosa Restaurant <sup>°</sup>	279 3002,04	10,20x27,30 33,46x89,57	2,9 9,51	70	-	-	50	200	180

<sup>°</sup> Daylight

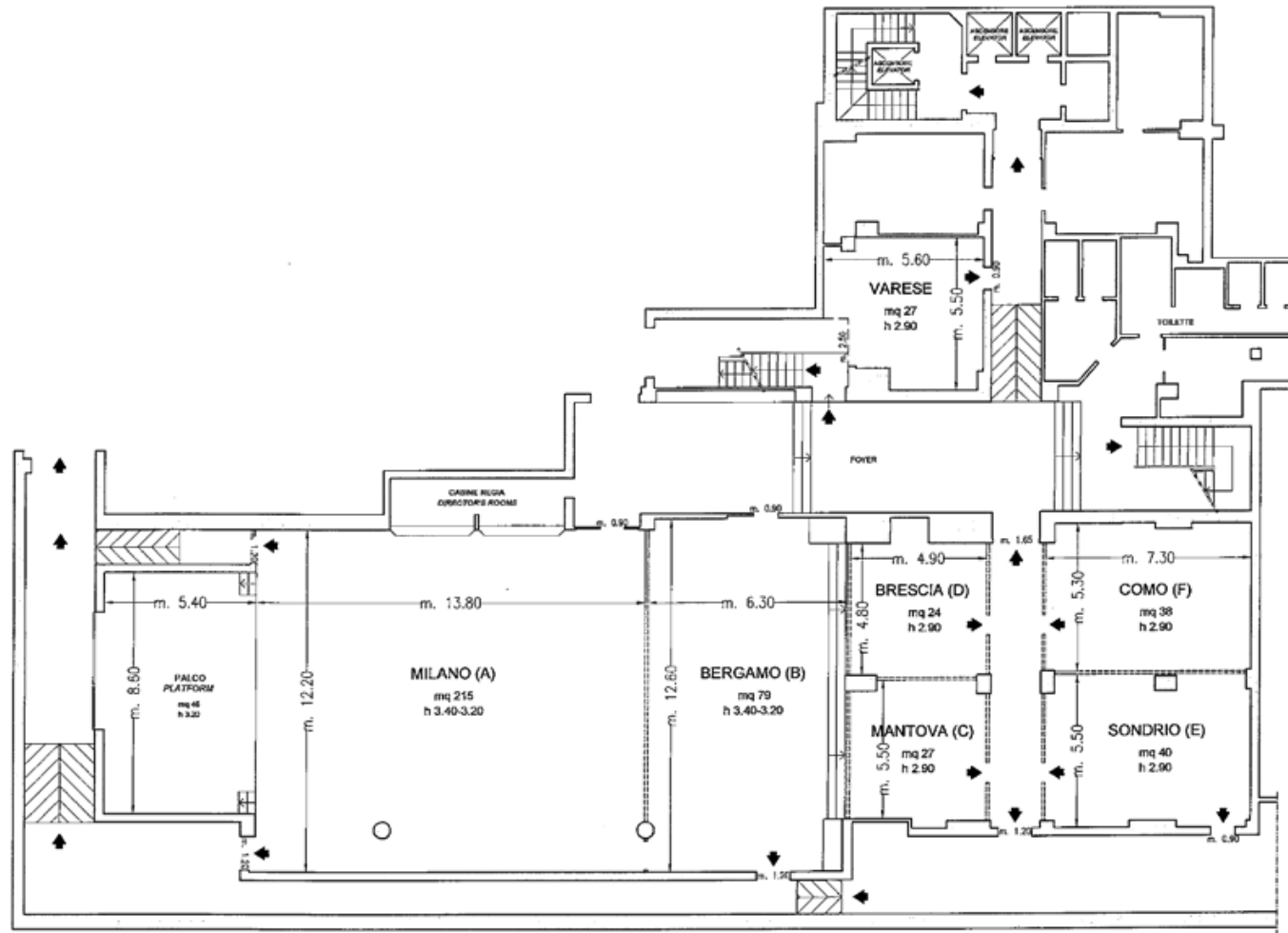
<sup>^</sup> Cabaret style: Diameter tables cm 80, up to 4 pax each or diameter cm 160, up to 8 pax each

STARHOTELS®

Cristallo Palace

BERGAMO

Via Betty Ambiveri, 35  
24126 Bergamo - ITALY  
T +39 035 311211 - F +39 035 312031  
meeting.cristallo.bg@starhotels.it starhotels.com



Piano -1 / Basement

◆ Uscite di sicurezza / Emergency Exits

--- Finestre / Windows

▤ Pareti mobili / Modular Walls

□ Colonne / Columns

7 meeting room fino a 450 persone/ 7 meeting rooms up to 450 seats

STARHOTELS®

Cristallo Palace

BERGAMO

Via Betty Ambiveri, 35  
 24126 Bergamo - ITALY  
 T +39 035 311211 - F +39 035 312031  
 meeting.cristallo.bg@starhotels.it starhotels.com