

STARHOTELS®
COLLEZIONE

The Pelham

LONDON

LIFESTYLESM

Preferred

HOTELS & RESORTS

15 Cromwell Place
South Kensington
London SW7 2LA UK
T +44 (0) 20 7589 8288
Reservations.thepelham@starhotels.com
pelhamhotel.co.uk

GDS Code

Amadeus: PH LONTPH
Apollo / Galileo: PH 64603
Sabre: PH 33479
Worldspan: PH LONPH

Rooms & Suites

All of Pelham's 52 bedrooms and suites have their own unique styling and design with a mix of antique as well as modern furniture, paintings and fabrics.

Restaurant & Bar

Bistro Fifteen and Bar 15 welcome you at any time of the day for a delicious breakfast, lunch, afternoon tea or a dinner. The ambience is bright and fresh during the day, and becomes more romantic when the evening approaches.

Services

Individual services to ensure you enjoy an exceptional stay, from Les Clefs d'Or concierge and 24-hr room service to Wi-Fi and a peaceful library.

Meetings & Events

We have five bright, chic meeting rooms for up to 45 people and a private dining room, a drawing room and a library available for private gatherings.

The Pelham is an elegant 5 star hotel in the heart of South Kensington. The hotel is located a short walk from the Natural History Museum and Kensington Gardens, which seem to have inspired the brightly colored interiors. Here one is surrounded by a romantic mix of elegant patterns and rich tones. It has long been considered among the most sophisticated places in London. Settle in and revel in the character of the wood-panelled drawing room and library. Make time for a little indulgence with an afternoon tea or candlelit dinner at Bistro Fifteen. Step out and explore the boutiques and world-class museums of Kensington







Location

The Pelham is just across the street from South Kensington Tube Station, with direct links to and from Heathrow airport, and a short hop on the tube to Piccadilly Circus, Oxford Street and many iconic central London locations. South Kensington itself is on your doorstep. You are just minutes from the Victoria and Albert and Natural History Museums, Harrods, Hyde Park and The Royal Albert Hall. After sightseeing or shopping, recharge in one of the area's many bars and bistros, including our very own Bistro Fifteen and Bar 15.

From St Pancras Station

- From this station travel by London Underground from Kings Cross/St Pancras Station (5miles) directly to South Kensington Station. You will be travelling Westbound on the Piccadilly Line (dark blue). We are located directly across the street from South Kensington Station. Journey time is about 30mins.

From the M25 & M4 Motorways

- Arrive via the M25 exit at Junction 15 & join the M4 Eastbound. Travel 10miles along the M4 until the Motorway ends & becomes the A4. Continue another 5 miles & follow signage for 'Central London' until you reach South Kensington & the Museum district. You will pass Gloucester Rd Underground Station, the Natural History Museum & finally reach the Victoria & Albert Museum. As you drive in front of the Victoria & Albert Museum turn right into Thurloe Place & continue through the first set of traffic lights (Exhibition Road). The Pelham is 200m in front of you. From Junction 15, journey time is approximately 45-60mins depending on traffic.

From London Heathrow Airport

- From any Heathrow Underground Station travel directly to South Kensington Station. You will be travelling Eastbound on the Piccadilly Line (dark blue). We are located directly across the street from South Kensington Station. Journey time is about 70mins.

From London Gatwick Airport

- From Gatwick Airport Railway Station travel directly to Victoria Station via the Gatwick Express. Journey time is about 30 mins. Upon arriving at Victoria Station move downstairs to Victoria Underground Station & travel directly to South Kensington Station. You will be travelling Westbound for two stops on the District (green) or Circle Lines (yellow). We are located directly across the street from South Kensington Station. Journey time from Victoria to South Kensington is about 10mins.



2 meeting rooms

All meeting rooms are equipped with: Wi-Fi (at a charge), sound system, screen, LCD projector⁽¹⁾, flip chart, other services are available upon request.

⁽¹⁾Max one LCD projector complimentary, additional requests at a charge

Meeting rooms	Area mq / ft.	L x W mt. / ft.	Height mt. / ft.	Theatre	Class room	Conference table/ U-shape	Cabaret style [^]	Cocktail reception	Banquet
Gallery (1) °	32 344	6,20x5,10 20,34x16,73	3,85 12,63	35	-	15	30	40	30
Gallery (2) °	20 215	5,10x4,10 16,73x13,45	3,85 12,63	10	-	9	12	20	12
Gallery (1+2) °	52 559	6,20x5,10+ 5,10x4,10 20,34x16,73+ 16,73x13,45	3,85 12,63	45	-	-	42	60	42
Private Dining Room °	22 237	4,80x4,60 15,75x15,09	2,4 7,87	12	-	10	-	20	12
Drawing Room °	32 344	5,50x6,80 18,05x22,31	2,5 8,20	20	-	14	10	25	16
Library °	26 280	5,10x5,10 16,73x16,73	2,5 8,20	15	-	9	10	20	10
Bistro Fifteen °	63 678	11,00x6,55 36,09x21,49	2,4 7,87	32	-	-	-	70	35

° Daylight

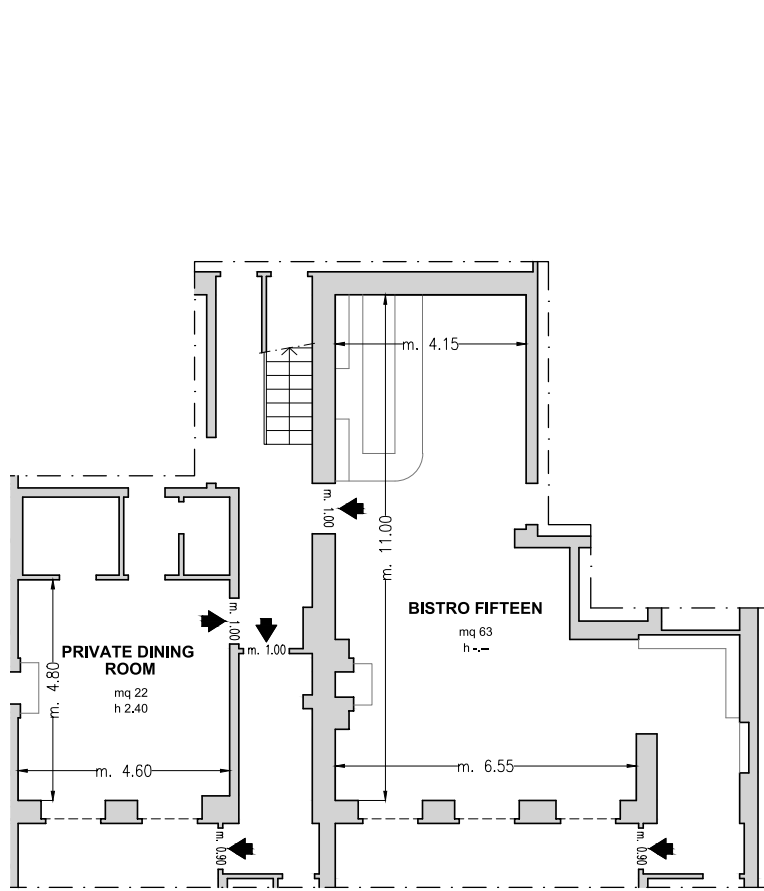
^ Cabaret style: Size tables diameter 150 cm



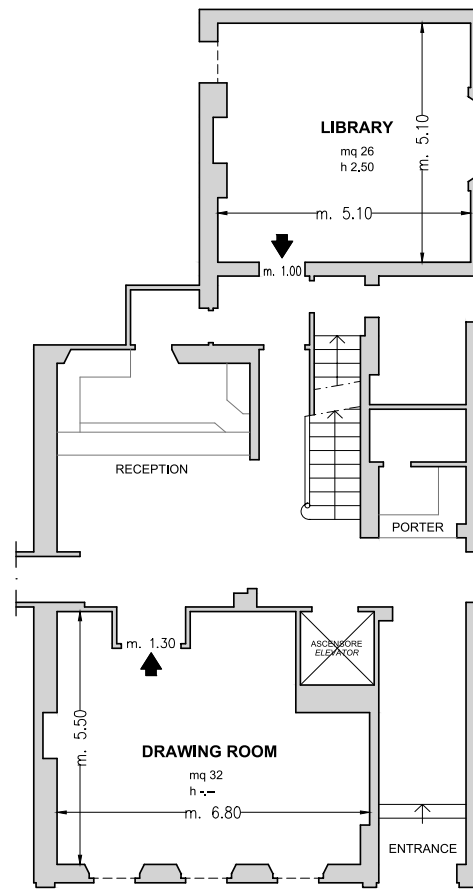
STARHOTELS[®]
COLLEZIONE

The Pelham
LONDON

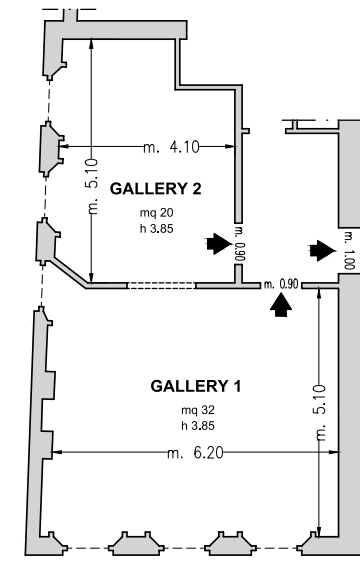
15 Cromwell Place, South Kensington
London SW7 2LA UK
T +44 (0) 20 7589 8288
events@pelhamhotel.co.uk pelhamhotel.co.uk



Piano -1 / Basement



Piano Terra / Ground Floor



Piano Primo / First Floor

➔ Uscite di sicurezza / Emergency Exit

===== Pareti mobili / Modular Walls

----- Finestre / Windows

■ Colonne / Columns

2 meeting room fino a 45 persone / 2 meeting rooms up to 45 seats