

STARHOTELS®
COLLEZIONE

The Michelangelo

NEW YORK

LIFESTYLESM

Preferred

HOTELS & RESORTS

152 West 51st Street
New York
NY 10019 USA
T +1 212 7651900
F +1 212 5416604
reservations@michelangelohotel.com
michelangelohotel.com

GDS Code

Amadeus: PH NYCMIC
Apollo / Galileo: PH 42286
Sabre: PH 33245
Worldspan: PH 20198

Rooms & Suites

The Michelangelo is located in the Midtown district, close to 5th Avenue and Rockefeller Center and only a short walk from Central Park and Broadway.

Restaurant & bar

Relax with a drink in our Insieme Bar. Or for exquisite dining, you will find numerous Michelin-rated restaurants nearby, and the famous Restaurant Row is also close at hand.

Services

Specially selected to make your stay truly effortless – from 24-hr room service, Wi-Fi and Les Clefs d'Or concierge to limousine transfers to Wall Street.

Meetings & Events

Four flexible meeting rooms for up to 80 people, a sumptuous private dining room and an expert team will help deliver your event with style.

Flair meets function. The eclectic meets the everyday. In many ways, The Michelangelo is quintessentially 'New York': a grand master of a hotel on the corner of 51st and 7th Avenue. Like the city itself, the hotel is a tapestry of influences, all wrapped up in authentic Italian elegance, chic style and family hospitality. It's a combination that ensures The Michelangelo is featured regularly in Travel+Leisure magazine's 'best hotels'. The Michelangelo, New York, is a member of Preferred Hotels & Resorts.







Location

You'll find The Michelangelo right in the lively center of New York, with many must-see New York City attractions and exciting sights all within easy reach. We're on the corner of 51st and 7th Avenue in the Midtown district of New York, close to Rockefeller Center and the world-class shopping of 5th Avenue. Just a stroll to the north will take you to Central Park, or south to the bright lights of Times Square, and the world-famous theatres and shows of Broadway are only a block away.

From JFK Airport - Travel time: 45 to 60 minutes

- Leaving JFK, take the Van Wyck Expressway to the Grand Central Parkway to the Triborough Bridge, follow signs to New York - Manhattan. After the Tollbooths follow signs to FDR Drive South-New York City. Get off the FDR on a right hand Exit at 49 Street / UN Garage. Turn right and go 8 City blocks to 6th Avenue / Avenue of the Americas. Turn Right on 6th and go 2 blocks to 51 Street. Turn left on 51 Street. We are at the end of the block on the left hand side.

From La Guardia Airport - Travel time: 30 to 45 minutes

- Leaving La Guardia, take the Grand Central Parkway to the Triborough Bridge, follow signs to New York City West. After the Bridge Tollbooths follow signs to FDR Drive South-New York City. Get off the FDR on a right hand Exit at 49 Street / UN Garage. Turn right and go 8 City blocks to 6th Avenue / Avenue of the Americas. Turn Right on 6th and go 2 blocks to 51 Street. Turn left on 51 Street. We are at the end of the block on the left hand side.

From Newark Liberty Airport - Travel time: 45 to 60 minutes

- Take the New Jersey Turnpike north to the Lincoln Tunnel. Once through the tunnel on the Manhattan side, the flow of traffic will wind you left. It brings you to a "T" on 42 Street. Turn left a short block to 10th Avenue. Turn right on 10th Avenue, and go 8 blocks. Turn right on 50th Street. Go 4 City blocks to 6th Avenue. Turn left on 6th . Go 1 block to 51 Street. Turn left on 51 Street. We are at the end of the block on the left hand side.

From points to the North

- Take Route 95 South. As you approach New York City look for signs for Bruckner Expressway West (Route 278). Take the Bruckner Expressway to Triborough Bridge. Take Triborough Bridge into Manhattan. After the tolls, bear left onto the FDR Drive (East Side Drive). Go 4/5 miles to the 49 Street / UN Garage Exit. Take the right hand exit, go 6 blocks to 6th Avenue (Avenue of the Americas). Turn right on 6th Avenue. Go 2 blocks to 51 Street. Left on 51 Street. We are at the end of the block on the left hand side.

From points to the South

- Take the New Jersey Turnpike north to the Lincoln Tunnel. Once through the tunnel on the Manhattan side, the flow of traffic will wind you left. It brings you to a "T" on 42 Street. Turn left a short block to 10th Avenue. Turn right on 10th Avenue, and go 8 blocks. Turn right on 50th Street. Go 4 City blocks to 6th Avenue. Turn left on 6th. Go 1 block to 51 Street. Turn left on 51 Street. We are at the end of the block on the left hand side. Look for the Italian Flag and the American Flag.



4 meeting rooms

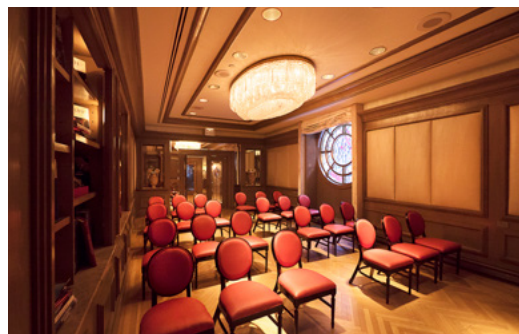
All meeting rooms are equipped with: Wi-Fi (at a charge), sound system, screen, LCD projector⁽¹⁾, flip chart, other services are available upon request.

⁽¹⁾All audio visual equipment available at a charge

Meeting rooms	Area mq / ft.	L x W mt. / ft.	Height mt. / ft.	Theatre	Class room	Conference table/ U-shape	Cabaret style [^]	Cocktail reception	Banquet
Florentine°	43 462,86	9,45x4,66 30,99x15,28	3,12 10,3	40	24	28	18	40	24
Venetian°	36 387,51	7,81x4,72 25,61x15,48	3,12 10,3	-	-	14	-	-	-
Roman°	88 947,25	12,88x6,70 42,24x21,97	3,15 10,6	80	55	38	48	100	60
Tuscan	85 914,92	7,01x12,19 23x40	2,6 8,5	40	-	20	16	40	24
Mezzanine	79 850,35	-	-	-	-	-	-	100	40
Mezzanine + Roman	167 1797,6	-	-	-	-	-	-	150	120

° Daylight

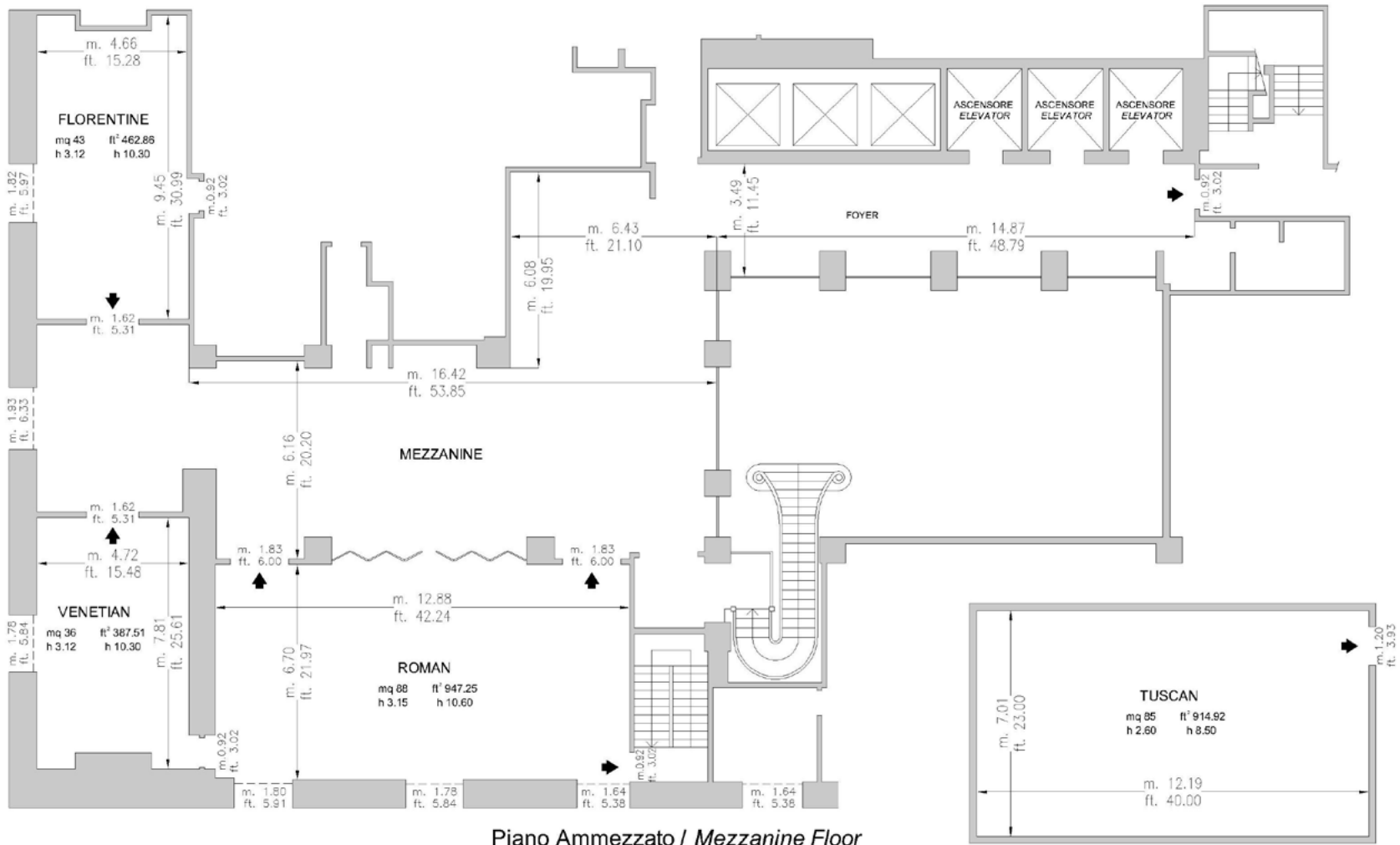
[^] Cabaret style: Size tables on request



STARHOTELS
COLLEZIONE

The Michelangelo
NEW YORK

152 West 51st Street New York
NY 10019 USA
T +1 212 7651900 - F +1 212 5416604
reservations@michelangelohotel.com michelangelohotel.com



4 meeting room fino a 80 persone/ 4 meeting rooms up to 80 seats

➤ Uscite di sicurezza / Emergency Exits

--- Finestre / Windows

■ Colonne / Columns